

# N25 NEWSLETTER

## N25 NEW ROSS BYPASS PPP SCHEME

ISSUE NO.9

[www.n25newross.ie](http://www.n25newross.ie)

2ND QUARTER 2018



### What's Happening Now?



East of the River Barrow



West of the River Barrow

The Barrow Bridge is divided into three sections at the moment, west of the river, main span and east of the river.

The section to the west of the river is the most advanced with the deck complete (along with approx. 75% wings). At present the temporary

support system is being dismantled.

The main span has started with a section of complete deck poured and the traveller has moved on to the next section.

The east section has also had a section of complete deck poured near pier 4. Between pier 5 &

6 a section of deck is nearing completion in mid-June when the wing traveller will be erected. Earthworks has progressed well due to the fine weather, with just over 80% of the mainline stabilised. The CBGM layer will be recommencing in the middle of June with good progress expected through the summer months.

Pavement works will also recommence in June and will follow tight behind the CBGM layer. Signage has started at various locations throughout the project and is expected to be ongoing for the next few months in stages. The slip form kerbs and surface water channels has commenced.

Works at Glenmore - Traffic is now flowing around the new roundabout and has recently moved on to the final phase (traffic switched last week in May 2018). The final phase will complete the roundabout and tie in to the existing N25 by end of July. The Ballyverneen underpass has been completed and the road through it is progressing.

There has been some extensive works done to the Ballyverneen road (L7513) in last quarter with the new alignment north of the main line opened in May 2018.

Works at Lacken south are expected to be complete with the new road opened in July 2018.



# ROADWORKS UPDATE



East of river – preparing for deck slab pour



Surface water channel



Section of mainline stabilised

Roadworks activities have progressed slowly over the last quarter due to inclement weather. Bulk earthworks is almost complete with only limited areas to be completed..

Drainage is now approx. 80% complete with connections to be made where we had sections that could not be excavated (namely Ballyverneen and Lacken) until now.

Surface water channels are underway – this is being done by a slip form machine fitted with a mould to the correct shape. This machine is also used for the in-situ kerbs with a different mould fitted.

Pavement foundation construction is well advanced with over 80% of the foundation now complete (stabilised). Other pavement base courses such as CBGM and lower base course are being carried out at present.



New bridge and road layout Lacken.



CBGM plant



Our project website [www.n25newross.ie](http://www.n25newross.ie) can be consulted for further information on the works. The website is regularly updated to provide current information on the scheme

To see all the progress we have made, check out the project Photo's on our Website – Gallery.

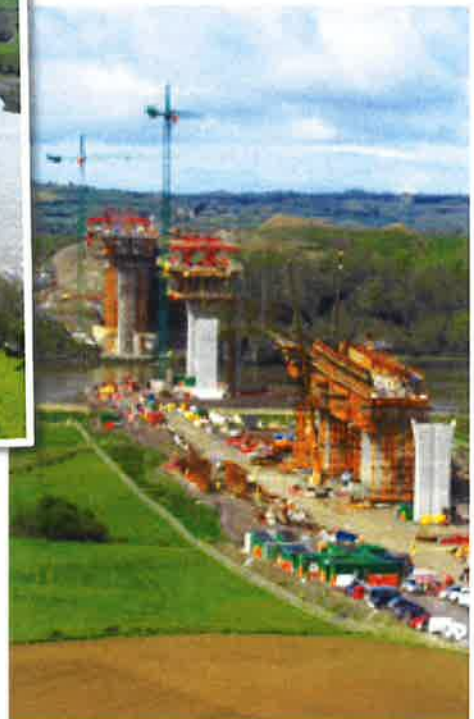
# TRAFFIC MANAGEMENT

N25 Glenmore  
 N25 Ballymacar  
 L7513 Ballyverneen  
 L4013 Lacken south  
 L8046-1 Creaken  
 R733 at Camlin  
 N30 Corcorans Cross

Current traffic management will remain in effect until late July.  
 Current traffic management will remain in effect until October.  
 Current traffic management will remain in effect for this quarter.  
 Road will reopen in July.  
 Road closure scheduled Mid-June for 4weeks.  
 Verge works and junction realignment starting Mid-June for 6weeks.  
 Traffic management will be installed.during quarter 3.Futher information will be circulated in advance

We would like to thank all motorists for your continued patience and ask that you drive with caution through our works

PLEASE DRIVE SAFELY

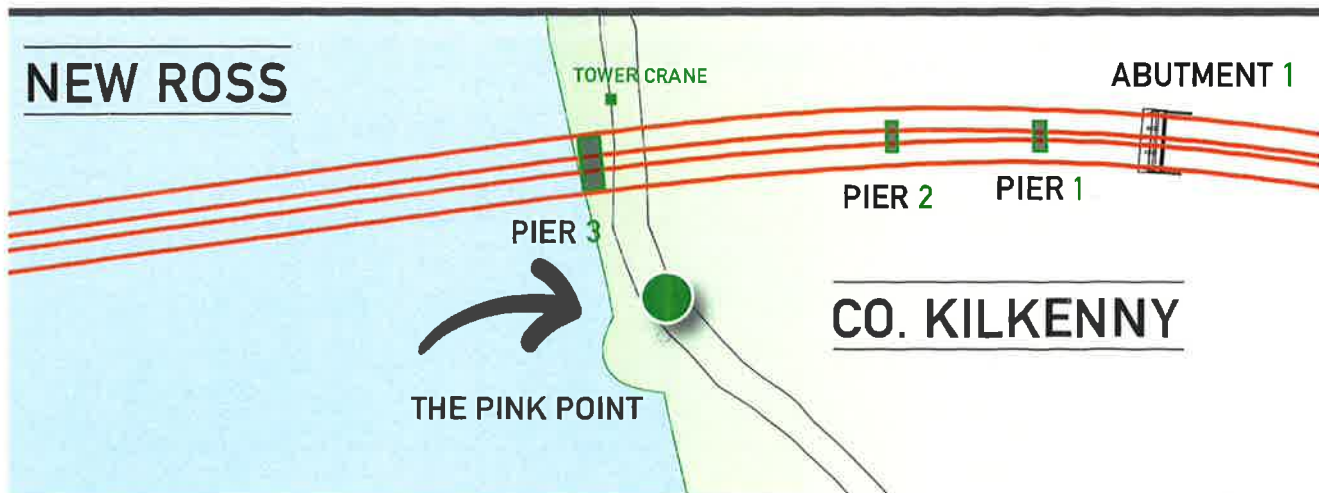


## Barrow Bridge

### Notice Board & Viewing Point

The NRJV have erected a notice board at Pink Point. Interesting information regarding the different construction phases of the bridge as it progresses will be displayed here.

NEW ROSS



CO. KILKENNY



## STRUCTURES UPDATE

There are only three remaining structures (excluding Barrow Bridge).

- The structure at Lacken south is almost there, with a road closure now in effect with the projected reopening towards end June 2018.
- Ballyverneen Underbridge is preparing for the deck pour and works are expected to be complete in mid-July.
- The last structure is a post tensioned in-situ bridge (old rail line Ballyverneen). The piers are complete, the abutments are underway and now the deck can progress.

## CURRENT WORKS -

Q2 2018

- Road surfacing
- Structures: Two Bridges in Ballyverneen and finishing works to bridges
- Accommodation works for land owners
- Completion of earthworks: Drainage, cut & fill operations, stabilisation and topsoiling ongoing in period
- Barrow Bridge: continue with deck construction west of river, finish pier construction, formwork erection for deck east of river - Traveller in operation P4
- Road Diversion – Glenmore phase 3 and local roads

## UPCOMING WORKS -

Q3 2018

- Glenmore roundabout final phase completion
- Complete earthworks west of River Barrow
- Recommence CBGM layer throughout project
- Recommence blacktop layers throughout project
- Lacken road south – complete works and reopen road
- Some local road closures to complete tie-ins
- Commence Pylons at pier 3, 4 & 5 and progress deck over the river Barrow



Map Alerts App available for free download at -

<https://www.mapalerter.com/councils/wexford>

<https://www.mapalerter.com/councils/kilkenny>

## CONTACT DETAILS

**24 HOUR Hotline Number: 1800 815 672**

### BAM Dragados New Ross Joint Venture

Christy Hannon  
Public Relations Officer  
Site Offices  
Landscape  
Stokestown  
New Ross  
Co. Wexford

T: 051 432020  
E: [info@n25nrjv.com](mailto:info@n25nrjv.com)  
W: [www.n25newross.ie](http://www.n25newross.ie)

### Wexford County Council

Seán Dobbs  
Public Liaison Officer  
Wexford County Council  
c/o Roads Department  
Wexford County Council  
Carricklawn  
Wexford

W: [www.wexford.ie](http://www.wexford.ie)  
T: 053 923 2358  
F: 053 923 3245

### Transport Infrastructure Ireland

Mary Bowe  
Authority's Representative  
Parkgate Business Centre  
Parkgate Street  
Dublin 8  
D08 DK10  
Ireland

E: [info@tii.ie](mailto:info@tii.ie)  
W: [www.tii.ie](http://www.tii.ie)  
T: 01-646 3400